

# PRESSURE REGULATOR FOR WATER, WITH FEMALE THREAD

RWI

**Description**

Regulator independent of inlet pressure, made of gunmetal, with strainer of stainless steel. Regulators up to 10 bar outlet pressure equipped with diaphragm, all others are piston-operated. particularly all regulators RWI...C with outlet range 1.5 ...6 bar

**Drinking water**

**Media**

preferably water or drinking water, but also compressed air, neutral liquids and non-corrosive gases. Especially suitable for compressed air are regulators RWI...D. It has to be considered that these regulators are non-relieving.

**Pressure difference Reduction ratio**

1 bar, between inlet and outlet pressure  
between supply and outlet pressure should not be greater than:  
20:1 for RWI...A, 10:1 for RWI...D, 6:1 for RWI...G/H, 3:1 for RWI...I

**Mounting position**

any, preferably vertical  
G¼ on both sides of the body for outlet pressure, ports are closed with screw plugs.

**Gauge port**

**ATEX**

**PED**

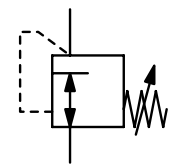
**Temperature range**

**Material**

according to ATEX2014/34/EU, EN1127, EN13463 for zone 1, 2, 21 and 22  
according to EU directives DGRL/PED for liquids and gases of group 2  
0 °C to 80 °C / 32 °F to 176 °F  
see opposite page

**Screw standard** according to DIN ISO 228

drinking water



G¼ up to G2  
0.2... 2/45 bar

Dimensions			Flow rate	Kvs	Nominal	Connection	Pressure		Order	B*
A	B	C	recommended	value	size	thread	inlet	outlet	number	
mm	mm	mm	(m³/h)*1	(m³/h)*2	DN	G	max. bar	bar		

**Regulator with female thread**

gunmetal, NBR/Buna-N  
drinking water: RWI...C

**RWI**

70	186	46	0.2	0.5	DN8	G¼	25	0.2 ... 2	RWI-02A
	167	47					25	1.5 ... 8	RWI-02D
	188	47					40	2.0 ... 20	RWI-02H
	191	48					60	20 ... 45	RWI-02I
70	186	46	0.2	0.6	DN10	G¾	25	0.2 ... 2	RWI-03A
	167	47					25	1.5 ... 8	RWI-03D
	188	47					40	2.0 ... 20	RWI-03H
	191	48					60	20 ... 45	RWI-03I
85	154	27	1.3	2.9	DN15	G½	16	0.2 ... 2	RWI-04A
	168	27	1.3	2.9			25	0.5 ... 4	RWI-04B
	168	27	1.3	2.9			25	1.5 ... 6	RWI-04C
	189	47	0.5	1.2			25	1.5 ... 8	RWI-04D
	163	27	1.3	2.9			25	1.5 ... 10	RWI-04E
	182	27	1.3	2.9			25	1.5 ... 12	RWI-04F
	233	27	1.3	2.9			25	2.0 ... 20	RWI-04G
	229	47	0.5	1.2			40	2.0 ... 20	RWI-04H
	218	47	0.5	1.2			60	20 ... 45	RWI-04I
95	157	27	2.3	3.9	DN20	G¾	16	0.2 ... 2	RWI-06A
	169	27	2.3	3.8			25	0.5 ... 4	RWI-06B
	169	27	2.3	3.9			25	1.5 ... 6	RWI-06C
	190	47	0.6	1.3			25	1.5 ... 8	RWI-06D
	164	27	2.3	3.9			25	1.5 ... 10	RWI-06E
	182	27	2.3	3.9			25	1.5 ... 12	RWI-06F
	234	27	2.3	3.9			25	2.0 ... 20	RWI-06G
	229	47	0.6	1.3			40	2.0 ... 20	RWI-06H
	218	47	0.5	1.2			60	20 ... 45	RWI-06I
105	156	29	3.6	5.4	DN25	G1	16	0.2 ... 2	RWI-08A
	105	170	29	3.6			25	0.5 ... 4	RWI-08B
	105	170	29	3.6			25	1.5 ... 6	RWI-08C
	95	242	56	0.7			25	1.5 ... 8	RWI-08D
	105	164	29	3.6			25	1.5 ... 10	RWI-08E
	105	184	29	3.6			25	1.5 ... 12	RWI-08F
	105	235	29	3.6			25	2.0 ... 20	RWI-08G
	95	256	55	0.7			40	2.0 ... 20	RWI-08H



RWI-02...-03A

RWI-04...-10A

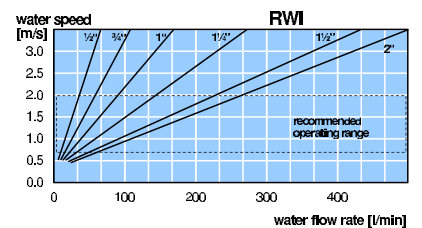
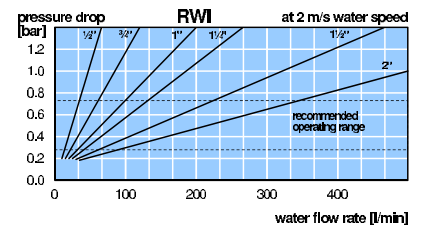


RWI-02...-08D

RWI-02...-08H/I

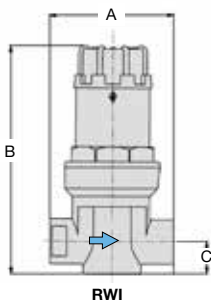


RWI-02...-10B/C/E/F/G

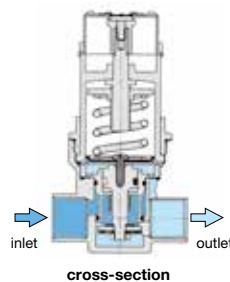


\* Product group

Special



RWI



cross-section

\*1 at 2 m/s water speed

\*2 for compressed air the flow is 70 times greater

PDF CAD  
www.aircom.net

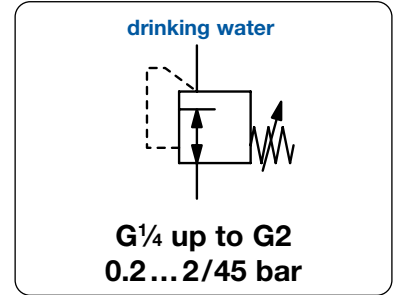


Order example:  
RWI-02A

# PRESSURE REGULATOR FOR WATER, WITH FEMALE THREAD

RWI

		Material										
Regulator	RW	RWI...A	RWI...B	RWI...C	RWI...D	RWI...E	RWI...F	RWI...G	RWI...H	RWI...J		
Nominal size	DN	DN8-10	DN15-80	DN15-50	DN15-50	DN8-50	DN15-50	DN15-50	DN15-50	DN8-20		
Body	all	gunmetal CnSn5Zn5Pb2-C-GS / CC499K (Rg5)										
Spring cage	< DN32	Ms (< DN25)	PA	Ms	PA	Ms (< DN25)	Ms	Ms (< DN25)	Ms (< DN25)	Ms (< DN25)		
	> DN40	-	Rg	GG	GG (> DN32)	GG	GG (> DN32)	GG (> DN32)	GG (> DN32)	GG (> DN32)		
Seals	all	NBR/Buna N										
Diaphragm	< DN25	CR	NBR/Buna N	NBR/Buna N	NBR/Buna N	NBR/Buna N	NBR/Buna N	NBR/Buna N	NBR/Buna N	NBR/Buna N		
	> DN32		NBR/Buna N	CR	NBR/Buna N	CR	NBR/Buna N	piston / NBR/Buna N	piston / NBR/Buna N	piston / NBR/Buna N		
Spring cage	< DN32	Ms	Ms, SS, Ho	Ms	Ms, SS, Ho (< DN25 Ms)	Ms	Ms, SS, Ho (< DN25 Ms)	Ms	Ms, SS, Ho (< DN25 Ms)	Ms		
	> DN40	-	Ms, SS	Ms, SS	Ms, SS	Ms, SS	Ms, SS	Ms, SS	Ms, SS	Ms, SS		
Reg. assembly	< DN32	cartridge			valve seat			cartridge			valve seat	
removable	> DN40	cartridge			valve seat			cartridge			valve seat	
Legend:		Ms: brass	SS: stainless steel	Rg: gunmetal	GG: grey cast iron	Ho: Hostaform C						



Dimensions			Flow rate	Kvs-	Nominal	Connection	Pressure		Order	
A	B	C	recommended	value	size	thread	inlet	outlet	number	B*
mm	mm	mm	(m <sup>3</sup> /h)*1	(m <sup>3</sup> /h)*2	DN	G	max. bar	bar		

Regulator with female thread						gunmetal, NBR/Buna-N drinking water: RWI...C	RWI		
120	174	47	5.8	6.1	DN32	G1 $\frac{1}{4}$	16	0.2 ... 2	RWI-10A
120	187	47	5.8	6.0			25	0.5 ... 4	RWI-10B
120	186	47	5.8	6.1			25	1.5 ... 6	RWI-10C
104	323	61	3.0	4.2			25	1.5 ... 8	RWI-10D
120	182	47	5.8	6.1			25	1.5 ... 10	RWI-10E
120	200	47	5.8	6.1			25	1.5 ... 12	RWI-10F
120	252	47	5.8	6.1			25	2.0 ... 20	RWI-10G
104	385	61	3.0	4.2			40	1.5 ... 20	RWI-10H
150	371	60	9.0	9.0	DN40	G1 $\frac{1}{2}$	16	0.2 ... 2	RWI-12A
150	301	60	9.0	9.0			25	0.5 ... 4	RWI-12B
150	293	52	9.0	9.0			25	1.5 ... 6	RWI-12C
108	323	61	3.2	4.5			25	1.5 ... 8	RWI-12D
150	365	52	9.0	9.0			25	1.5 ... 10	RWI-12E
150	361	60	9.0	9.0			25	1.5 ... 12	RWI-12F
150	386	60	9.0	9.0			25	2.0 ... 20	RWI-12G
108	392	61	3.2	4.5			40	1.5 ... 20	RWI-12H
160	371	60	14	13	DN50	G2	16	0.2 ... 2	RWI-16A
160	301	60	14	13			25	0.5 ... 4	RWI-16B
160	293	52	14	13			25	1.5 ... 6	RWI-16C
147	378	72	6.9	7.2			25	1.5 ... 8	RWI-16D
160	365	52	14	13			25	1.5 ... 10	RWI-16E
160	361	60	14	13			25	1.5 ... 12	RWI-16F
160	386	60	14	13			25	2.0 ... 20	RWI-16G
147	421	72	6.9	7.2			40	1.5 ... 20	RWI-16H

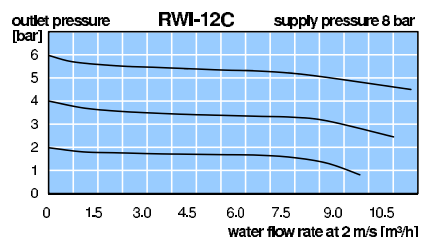
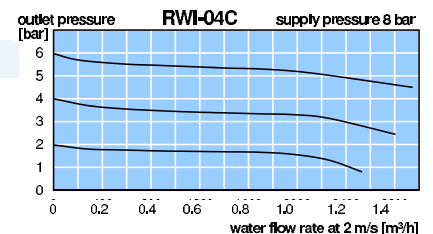
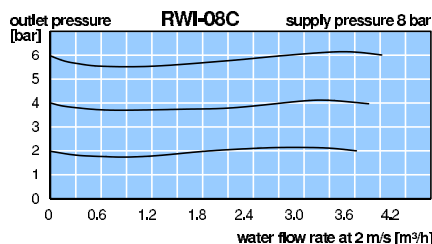
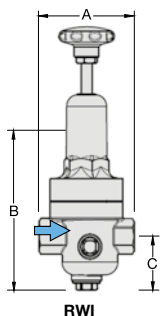


## Special options, add the appropriate letter

NPT	connection thread	RWI-...N
Elastomer	CR: C FKM: V	RWI-...V
for different media	warm-, hot-, and see water, acids, bases, oil, petrol glue, food, foam, gases etc.	RWI-...X

## Accessories, enclosed

pressure gauge	$\varnothing$ 50 mm, 0... <sup>*3</sup> bar, G $\frac{1}{4}$	up to G $\frac{1}{2}$ MA5002-... <sup>*3</sup>
	$\varnothing$ 63 mm, 0... <sup>*3</sup> bar, G $\frac{1}{4}$	from G $\frac{3}{4}$ MA6302-... <sup>*3</sup>



\*1 at 2 m/s water speed \*2 for compressed air the flow is 70 times greater  
\*3 02 = 0...2 bar, 04 = 0...4 bar, 06 = 0...6 bar, 10 = 0...10 bar, 16 = 0...16 bar, 25 = 0...25 bar, 60 = 0...60 bar

Gauges: see chapter for measuring devices

PDF CAD  
www.aircom.net

\* Product group



Order example:  
RWI-10A

Special

